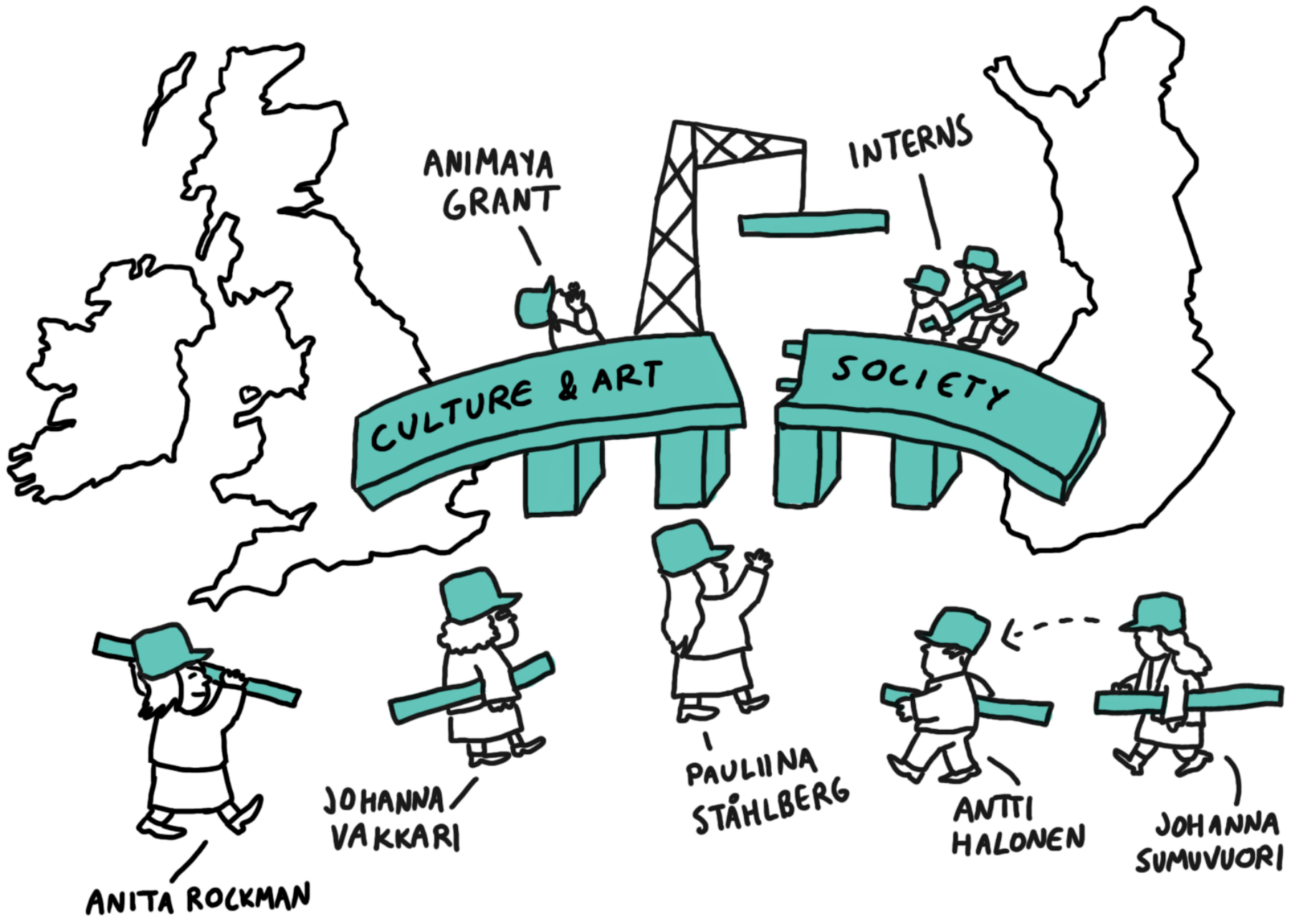


THE
FINNISH
INSTITUTE
IN LONDON



ANNUAL REPORT
2015



ANIMAYA GRANT

INTERNS

CULTURE & ART

SOCIETY

ANITA ROCKMAN

JOHANNA VAKKARI

PAULIINA STÄHLBERG

ANTI HALONEN

JOHANNA SUMVUORI

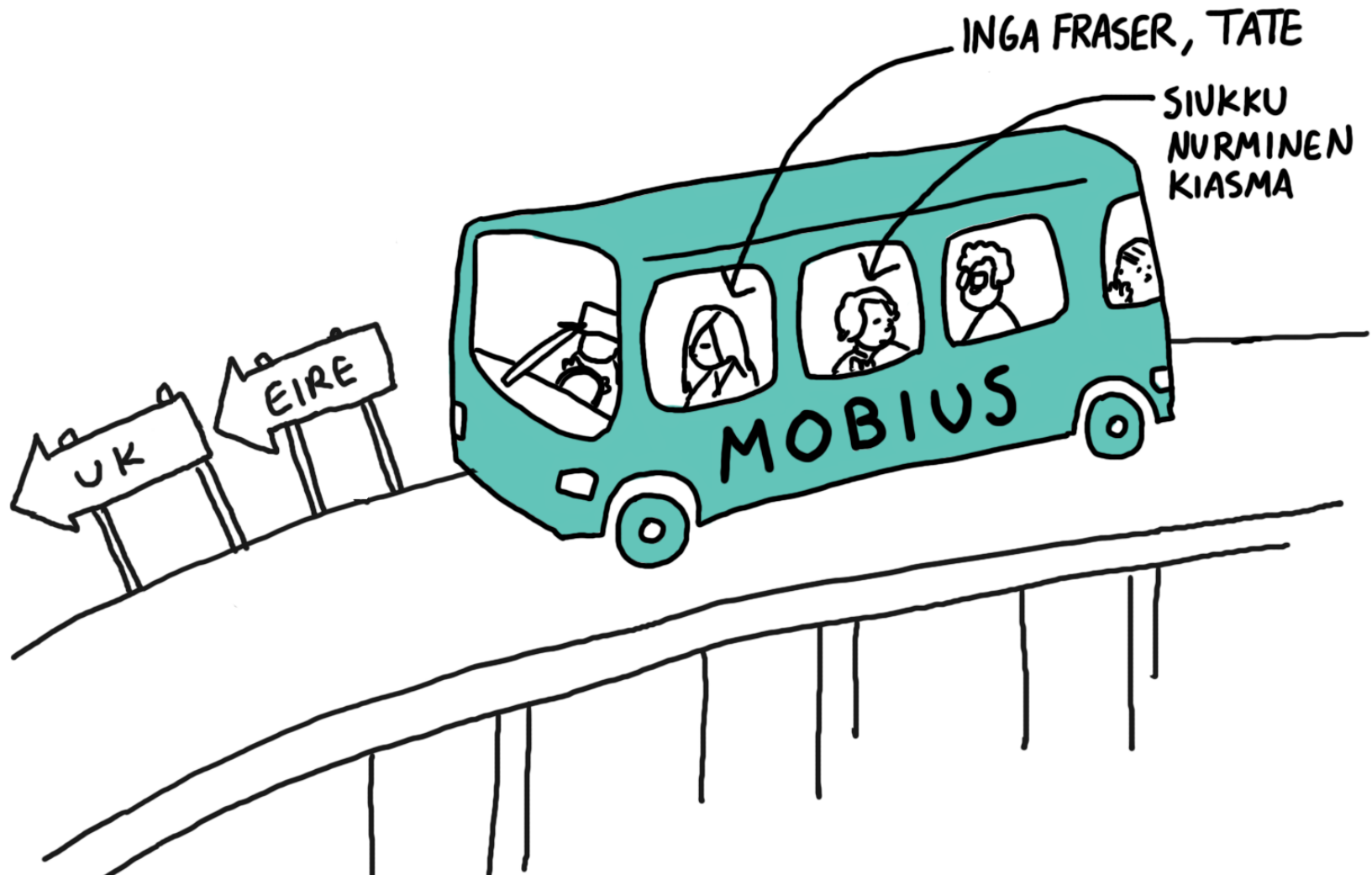


ARTS & CULTURE
PROGRAMME

MOBIUS

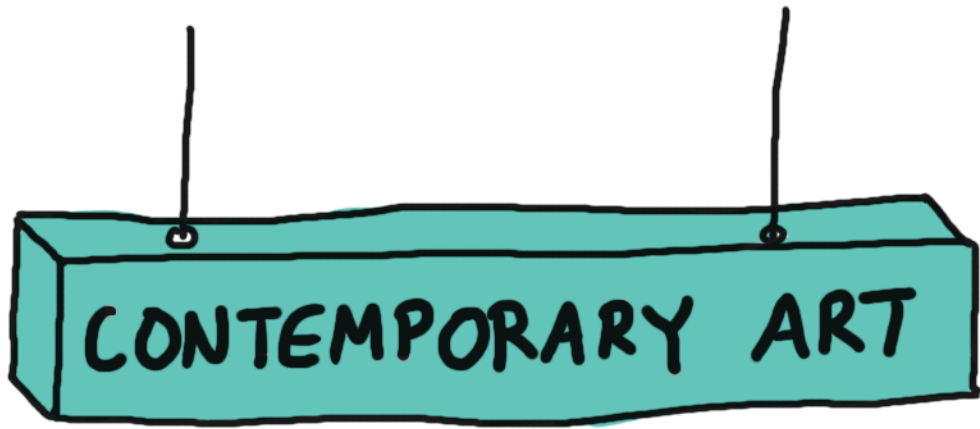
PEER TO PEER LEARNING & INTERNATIONAL EXPERIENCE

PROGRAMME FOR ART, ARCHIVE AND MUSEUM PROFESSIONALS (2014-2016)



RESIDENCIES





CONTEMPORARY ART

TALKS

HOW CAN ART
CHANGE THE WORLD?



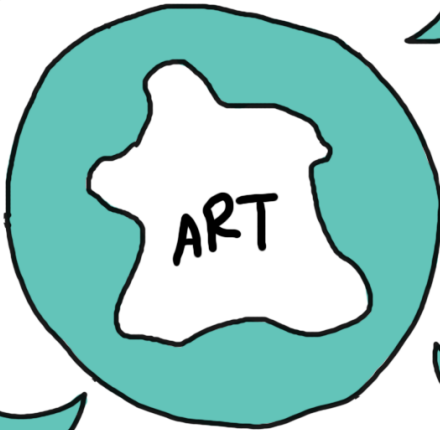
HOW DOES ART
GAIN VISIBILITY?



ARE THE
ROLES OF GAL-
LERIES & MUSEUMS
CHANGING? *



*IN CONTEMPORARY ART



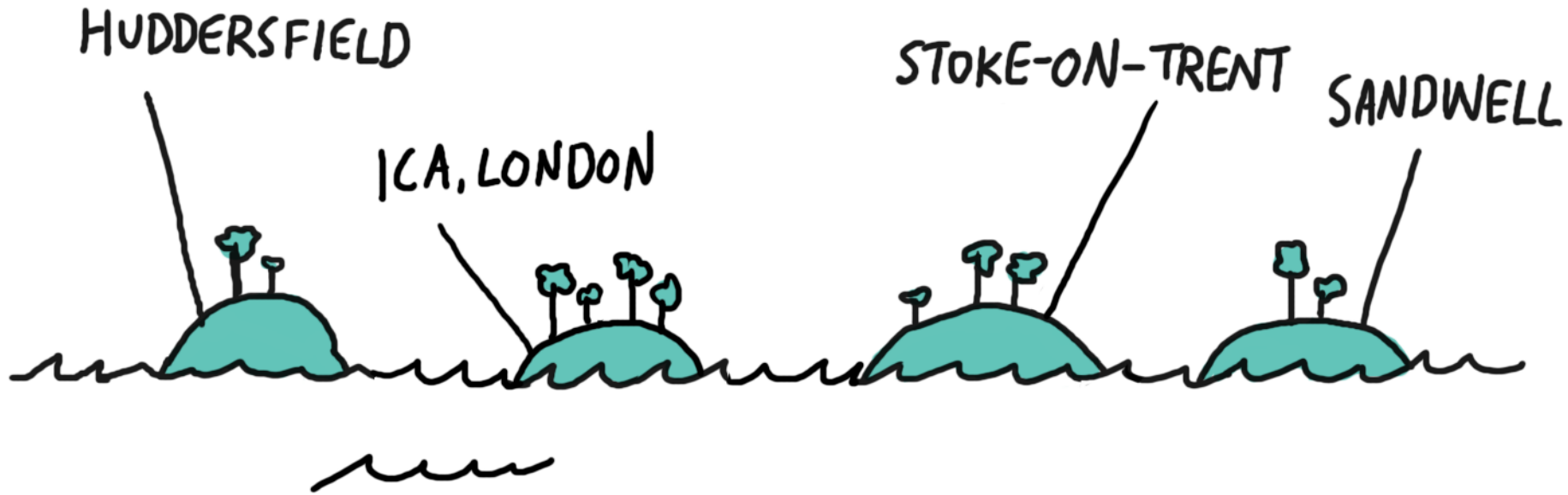
THE IMPORTANCE
OF BEING INTERNATIONAL



HOW CAN WE MEASURE
THE IMPACT OF ART?



TOVE JANSSON: TALES FROM THE NORDIC ARCHIPELAGO



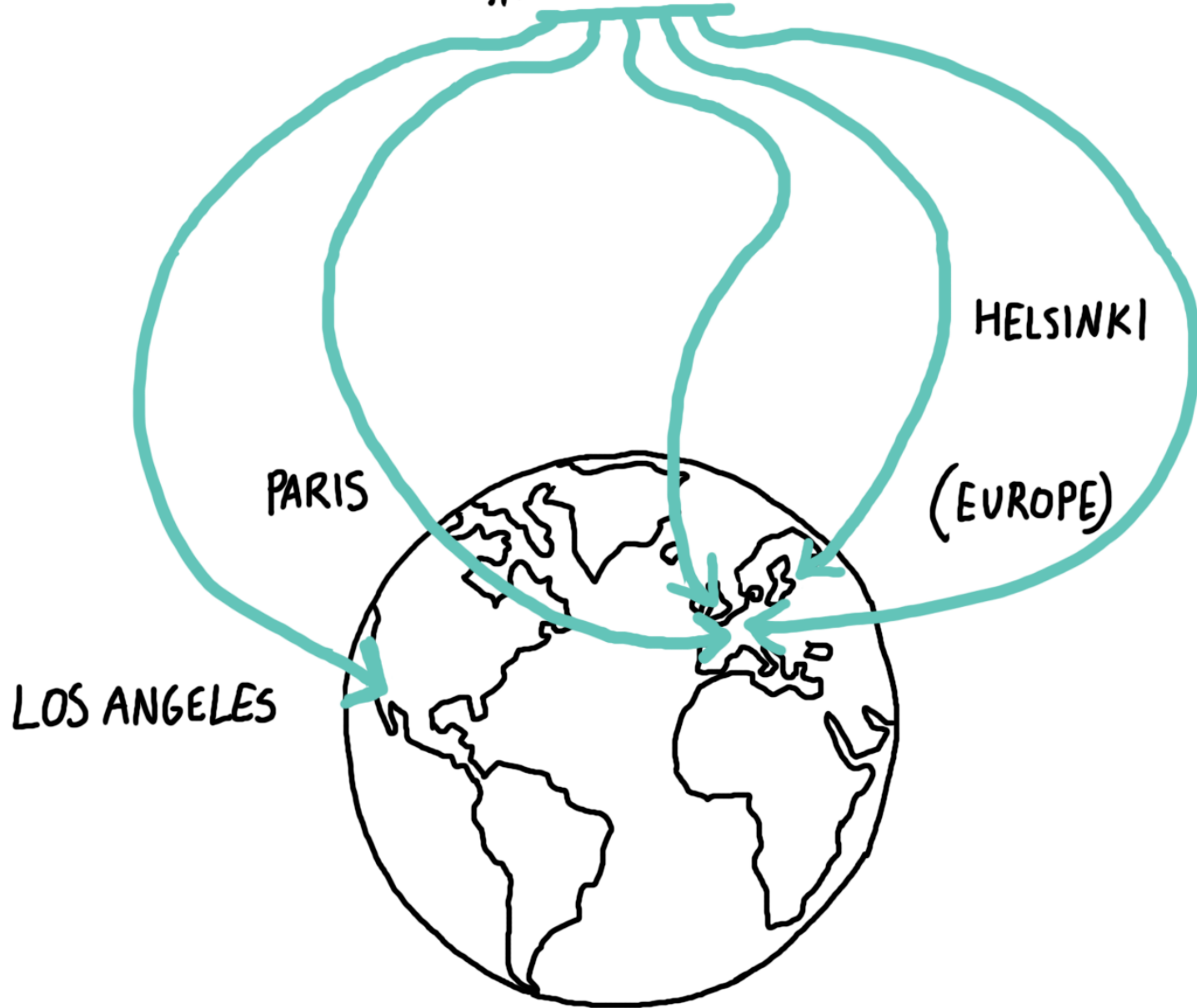
ROLLER DERBY KISSES

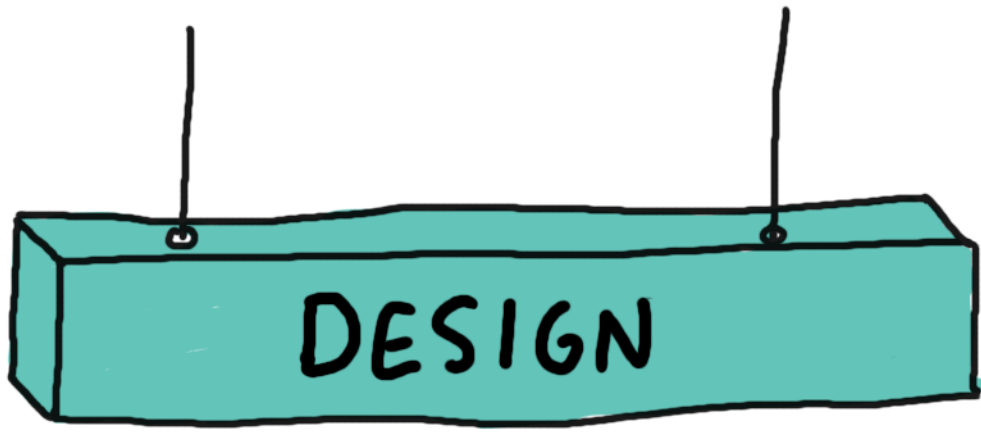
**MEDIA
HIT!**

RIIKKA
HYVÖNEN



FROM AN EXHIBITION
AT THE FINNISH INSTITUTE
IN LONDON TO



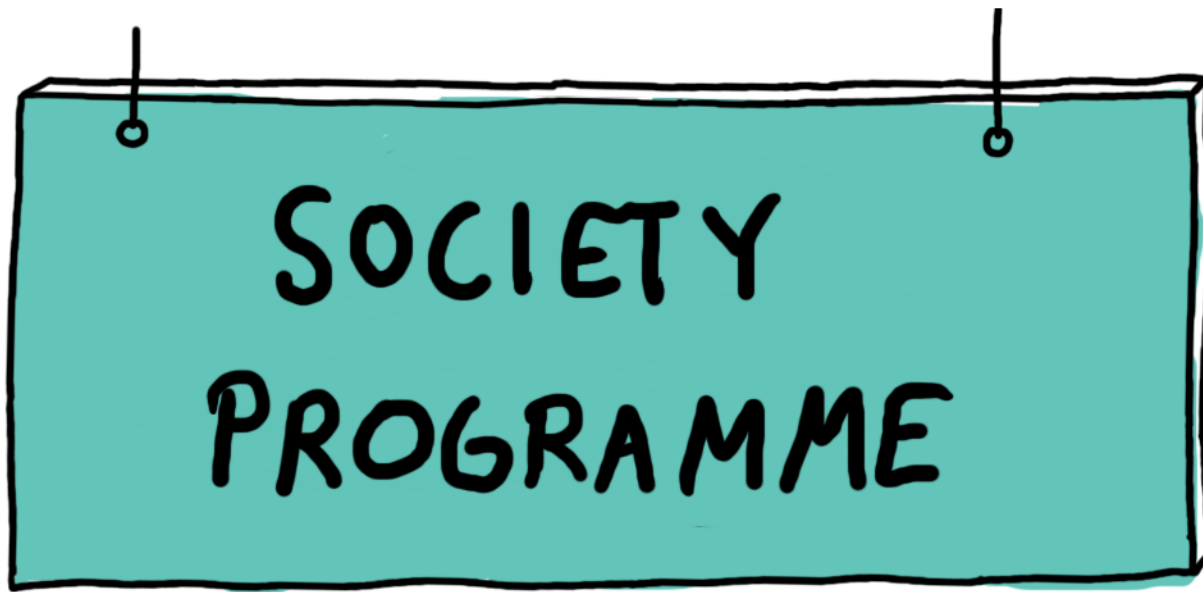


WONDER (FIN)LAND

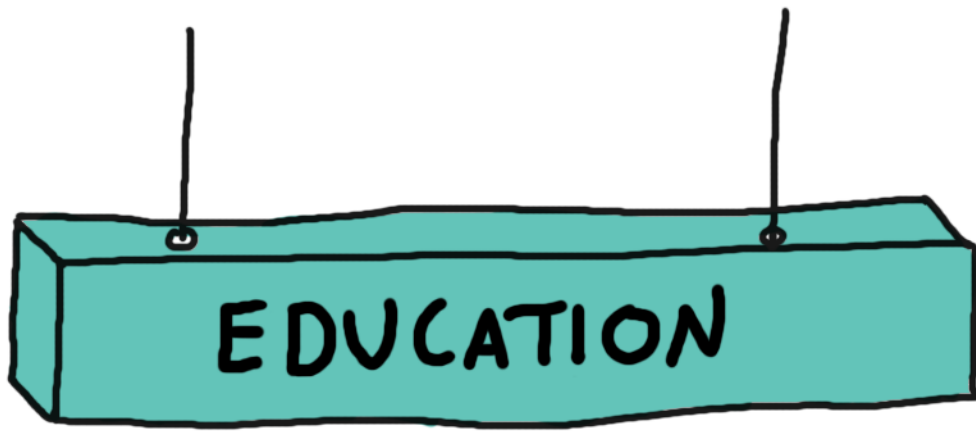


FINSK (SHOE BRAND) 10 YEARS

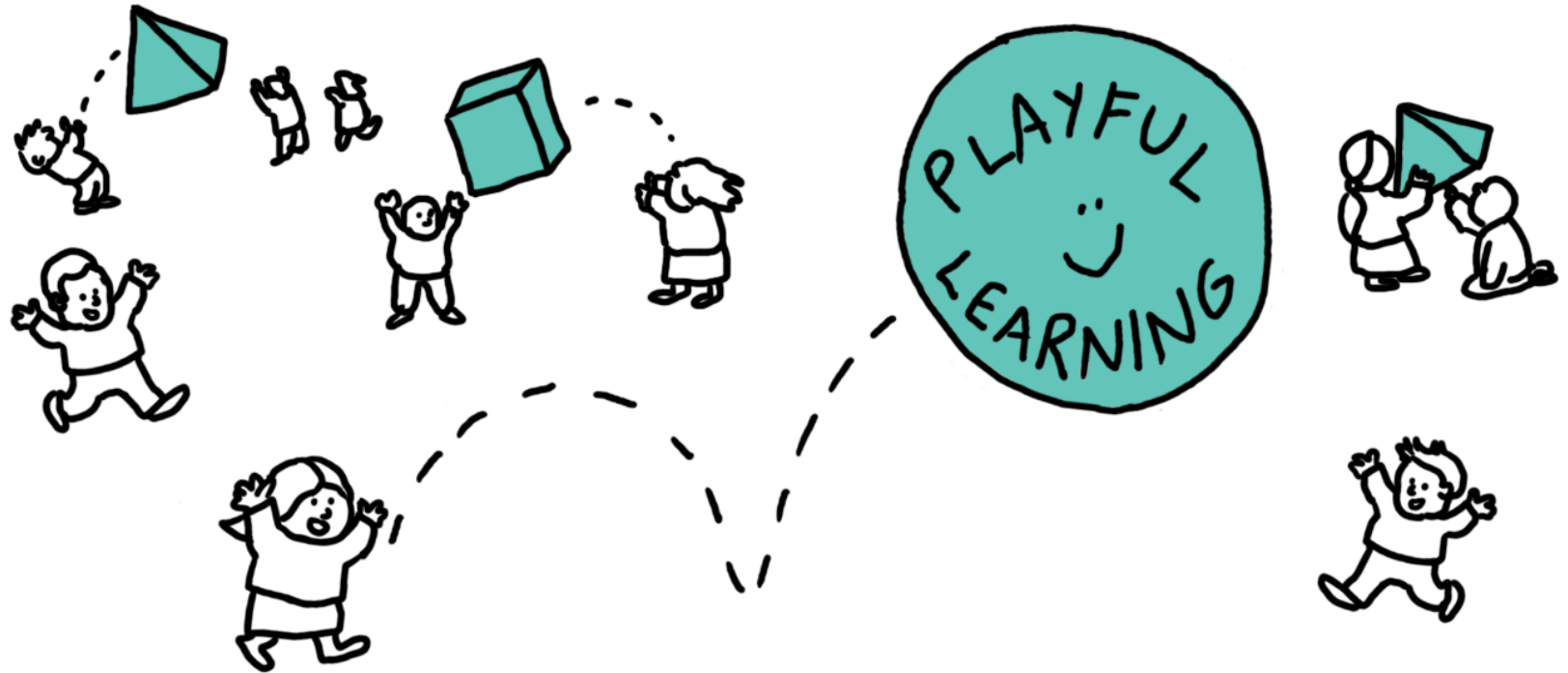




SOCIETY
PROGRAMME



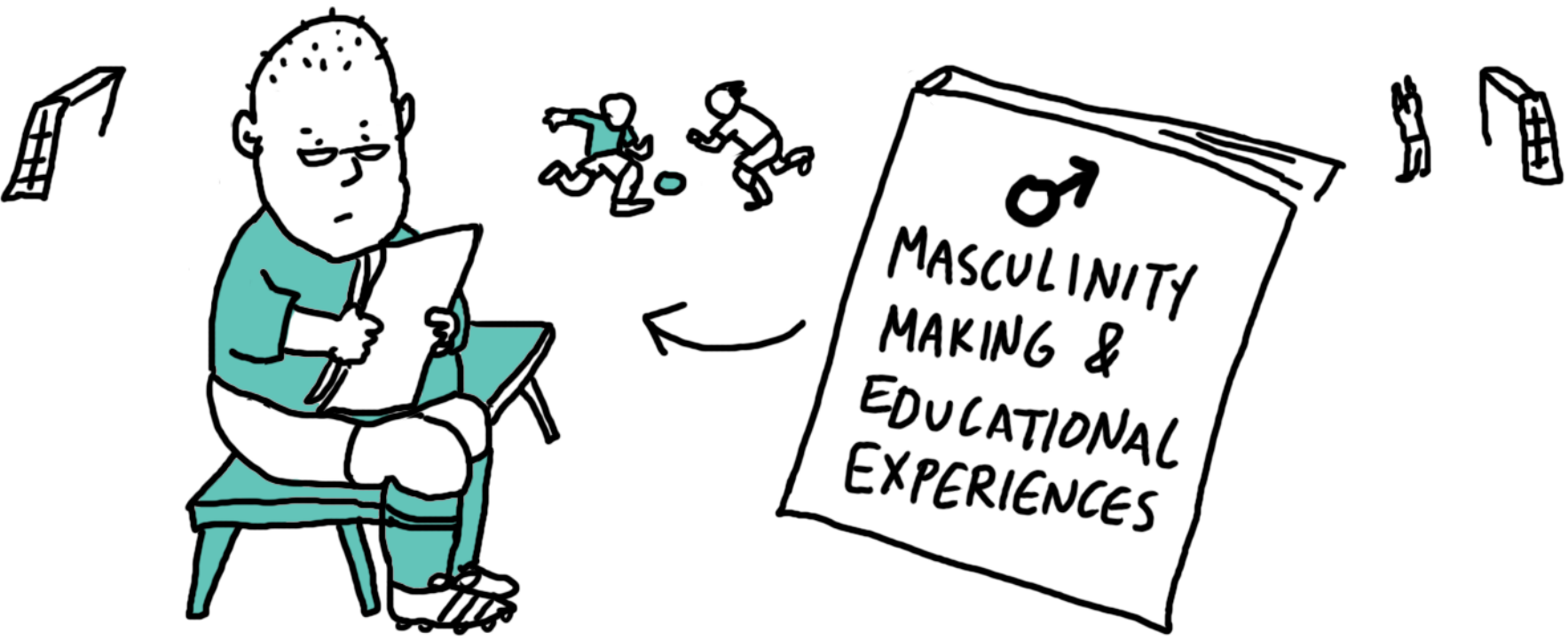
PLAYFUL LEARNING



FINNISH EARLY EDUCATION

PARTNERS: UNIVERSITY OF HELSINKI & UNIVERSITY OF CAMBRIDGE

REPORTS





EQUALITY & DIVERSITY

SEMINAR : GENDER SENSITIVE PARLIAMENTS



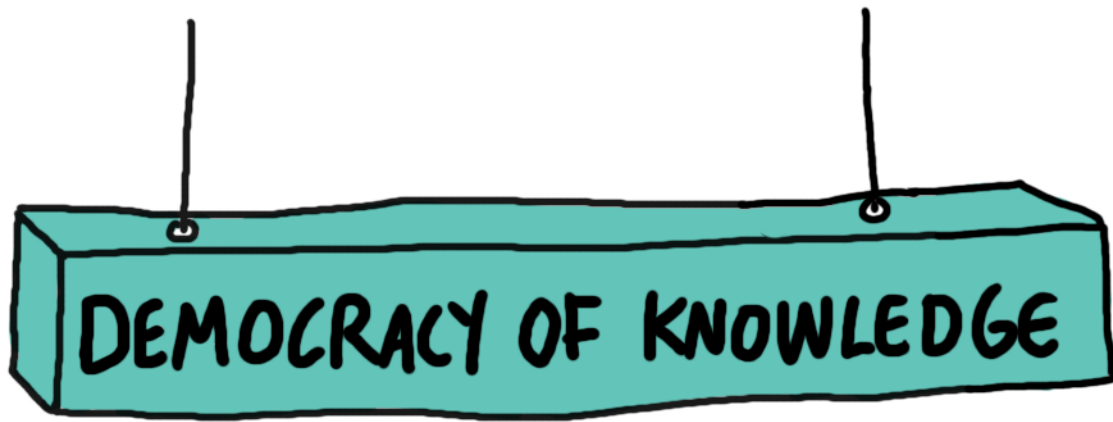
PARTNERS : WESTMINSTER, INTER-PARLIAMENTARY UNION (IPU)
& PROFESSOR SARAH CHILDS

EXPORTING & IMPORTING A FESTIVAL



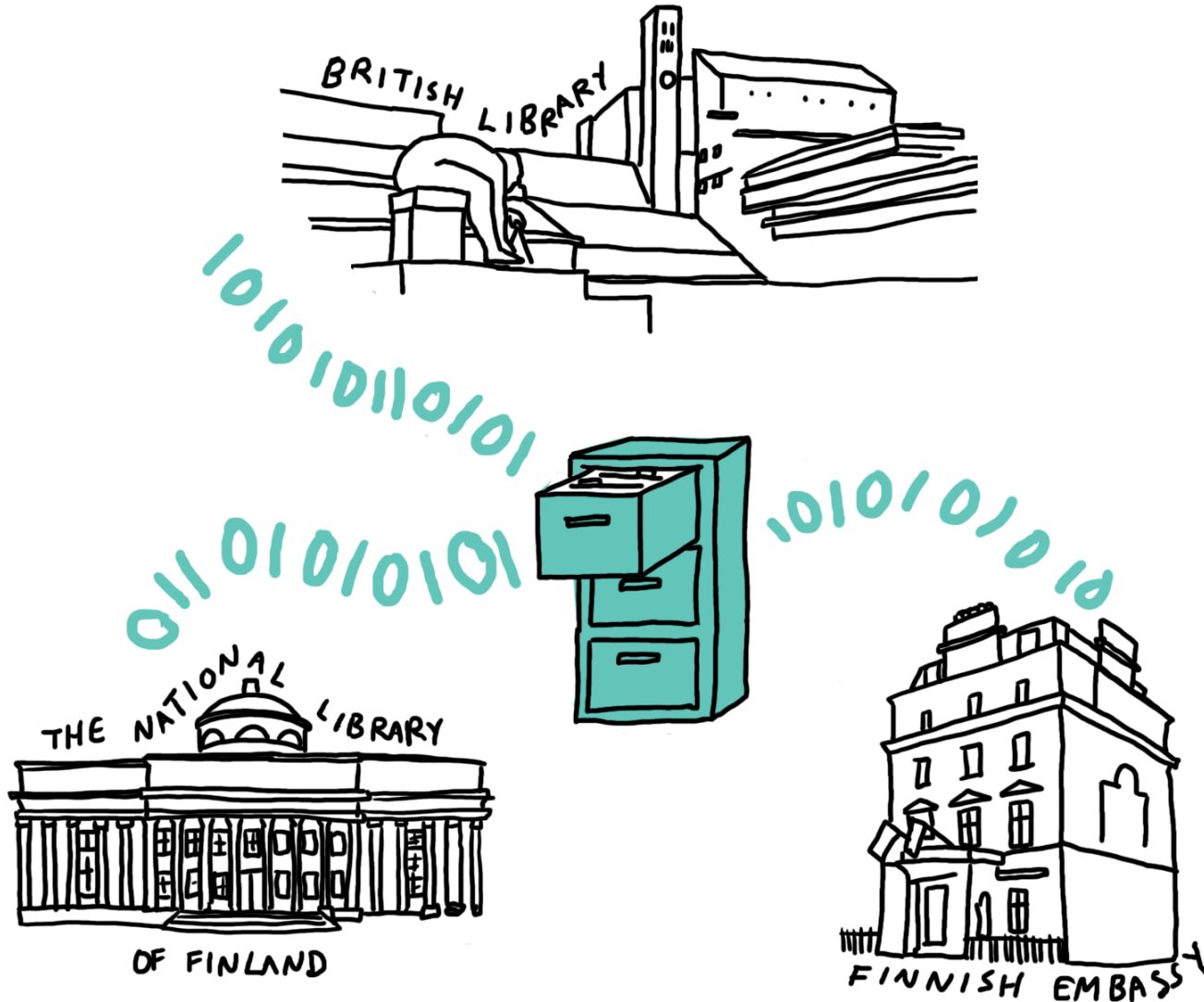
CULTURE HAS THE POWER





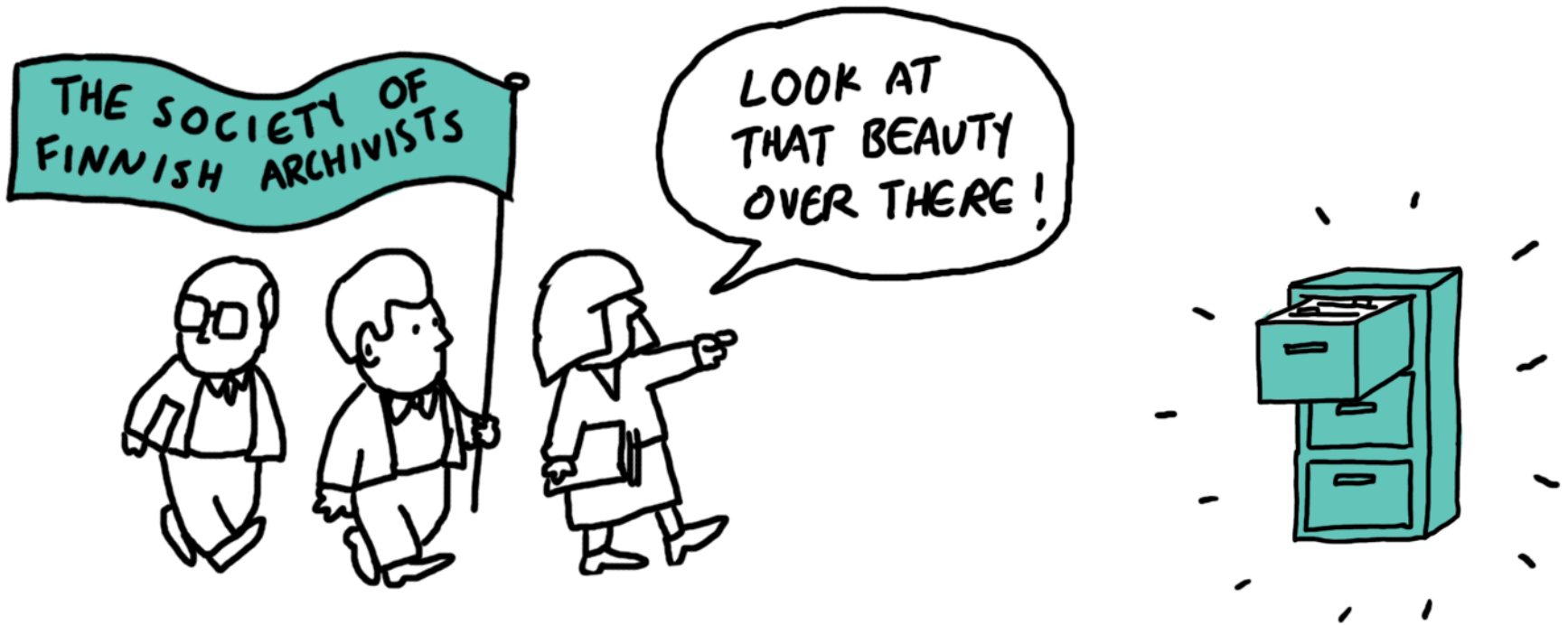
DEMOCRACY OF KNOWLEDGE

DIGITAL ARCHIVING PROJECT WITH BRITISH LIBRARY



PARTNER: THE NATIONAL ARCHIVES OF FINLAND

VISITS



TALKS

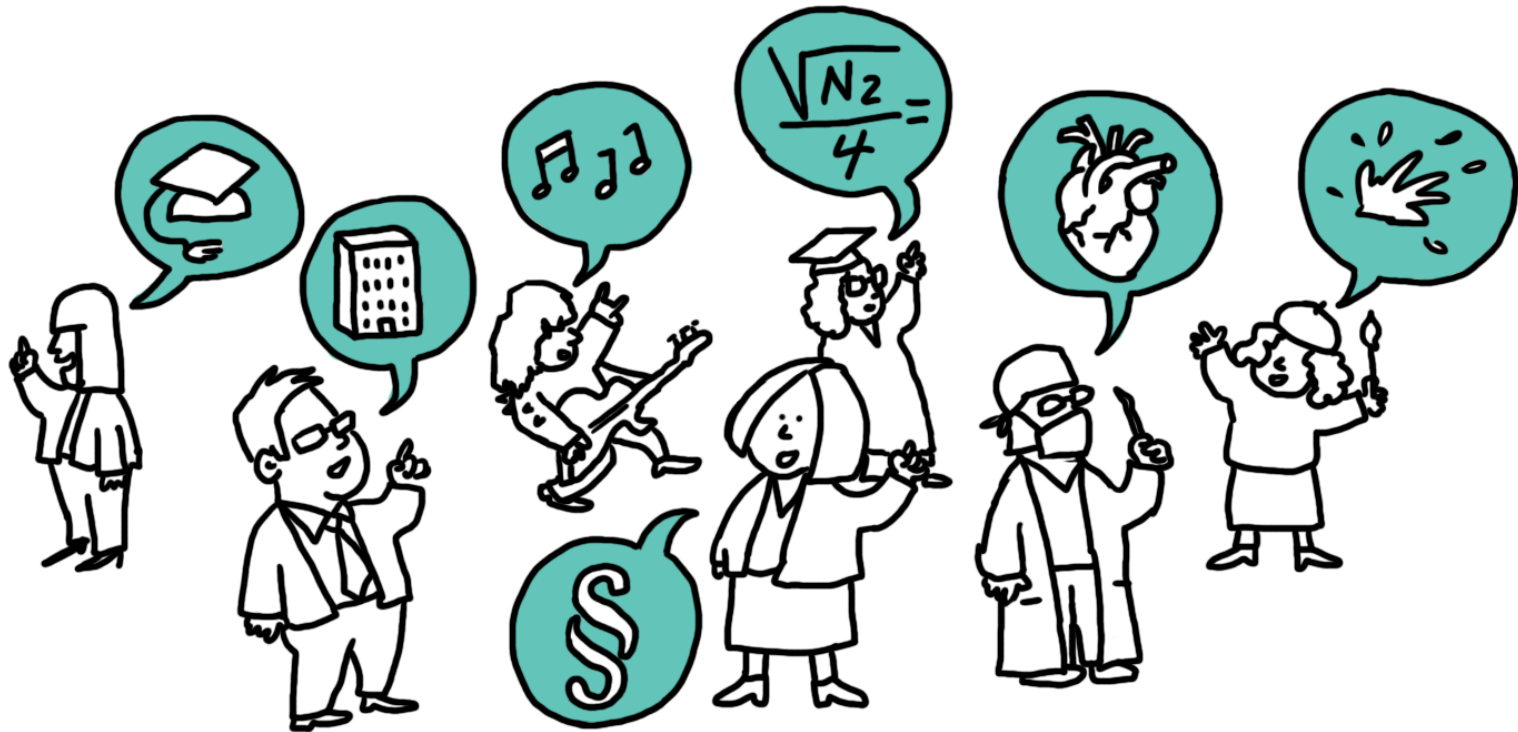


JULIANNE NYHAN

JUSSI PARIKKA

FINNSPERTS

A NETWORK OF FINNISH EXPERTS IN THE UK.
EVENTS AND BLOG POSTS.



WWW.FINNISH-INSTITUTE.ORG.UK