

(p)review

2008/2009

THE FINNISH INSTITUTE
IN LONDON

The Finnish Institute is a London-based private trust. Our mission is to identify emerging issues in contemporary society and to facilitate social change. We work with artists, researchers, experts and policy makers in Finland, the United Kingdom and the Republic of Ireland to promote sustainable networks in the fields of culture and social studies. We encourage new and unexpected collaboration and support artistic interventions and social innovation.

The Institute

- 1 Director's Introduction
- 2 Mission
- 3 Facts, Partners and Places
- 25–27

Arts & Culture

- 5 Programme Director's Introduction
- 6 Collaboration
- 7–8 Brokering Contacts
- 9 Residencies
- 10–11 Export
- 12–14

Society

- 15 Programme Director's Introduction
- 16 Social Entrepreneurship
- 17–18 Philanthropy
- 19 Inequality in Education
- 21 Labour Migration
- 22 Facilitating Research and Policy Making
- 23

THE
FINNISH
INSTITUTE
IN LONDON

Director's Introduction

2

THE INSTITUTE

It's a sunny afternoon and I am standing in the yard of Manor Farm in West Sussex, waiting to be served roast hog. Organic farmers Richard and Pauline Marks are raising rare local breeds of sheep and pigs in the beautiful South Downs.

I might be here simply because social entrepreneurship is the major strand in the Finnish Institute's programme aiming for policy impact. Manor Farm certainly falls into the right category with its rare breeds and a farm shop selling organic lamb, pork and beef.

However lovely the sheep and the pigs are, I am here, in fact, because the farm has reinvented itself today as a stage for Finnish maverick accordionist and composer Kimmo Pohjonen's concert tour *Earth Machine Music*. Pohjonen blends pre-recorded sounds of farm machines, pigs and sheep with the accordion and the animals and farmers perform live with him.

This is the Finnish Institute: pursuing specific agendas in specific fields of society and culture. In the best of instances true collaboration brings the separate programme strands together in a perfect blend. Right now, here at Manor Farm, where organic farming meets avant-garde music and where British key music industry players, such as Sounduk, promote Finnish music talent, we experience social enterprising at first hand. This might be an example of the positive change in society we push for; this certainly is the kind of cultural collaboration we promote.

RAIJA KOLI
DIRECTOR



Mission

3

THE INSTITUTE

The Finnish Institute in London has two main strands in its programme: Arts & Culture and Society. Within the field of culture we work to facilitate the export of culture, artist exchange and innovative collaboration across the arts and across borders. Within social studies we invite broad participation in order to focus on challenges and opportunities in contemporary society which will turn the results of research into evidence for policy makers.

The Finnish Institute works towards its mission through four approaches. Our remit is to work as a culture and social science radar and to identify emerging trends in contemporary society. Having identified key issues, we work as a broker recognising and bringing together key players within the different programme strands. We do this by acting as a London-based networker, forming partnerships and providing opportunities for collaboration. Having achieved collaboration we provide a platform for the facilitation of specific projects.





Riitta Ikonen,
Snowflake
2008

The Finnish Institute works to identify new themes, events, communities and individuals within contemporary art and culture that reflect changes, future challenges and possibilities for our society.

We promote Finnish art and culture, support cultural exchange through residencies and research projects, and facilitate cross-disciplinary and international collaboration. All our projects are produced in collaboration with local partners in England, Scotland, Wales, Ireland and Finland.

Programme Director's Introduction

6

ARTS & CULTURE

Riitta Ikonen is an artist who is literally down to earth. In her work, she disguises herself as a snowflake or places gigantic earthworms in unexpected landscapes. With her playful yet unsettling photographic images – documents of her artistic practice involving costume design and performance – Ikonen questions our relationship with the environment.

A recent Royal College of Arts graduate and recipient of the prestigious Beck's Canvas award, Ikonen is a great example of the kind of talent we support at the Institute. Our mission is to foster imaginative partnerships across arts and borders and strengthen professional networks between Finland, Great Britain and Ireland. Like Ikonen, we aim at identifying topical subject areas, brokering new contacts and nurturing the unexpected.

In 2008 we had the pleasure to work with Ikonen in conjunction with our Christmas event. Her contribution was one of the 28 projects in the Institute's Arts & Culture Programme covering 18 geographical locations and in collaboration with 46 partners. In the following pages you will discover, among other things, how the Institute has been instrumental over the years in supporting Finnish underground music or facilitating artist-in-residence programmes. In 2009-2011, we will also be developing a series of long-term collaborations involving, for instance, new Finnish design and artists working with urban media.

At the core of our work is a large network of partners combining the best new talent with challenging ideas. We welcome you to join us.

HANNA HARRIS
PROGRAMME DIRECTOR, ARTS & CULTURE



Collaboration

7

ARTS & CULTURE

The Arts & Culture Programme supports a number of collaborative projects that involve critical practice, longer-term partnerships and international exchange. In 2009-2011, these projects will explore changing social, physical and imaginative spaces and artists' responses to these changes.

CENTRIFUGAL: SEQUENCING THE FRINGE

Centrifugal is an international art project exploring three European edge cities - Helsinki, Belfast and Zagreb - and their relationship with a territorial and economic centre, London. The project was initiated by London-based Finnish curator Taru Elfving, and now includes a core group of artists, curators and researchers.

Centrifugal brings together critical thinking and collaborative artistic practice. Central to the project is the examination of conflict and change in urban spaces, and the discovery of new contrasts in and similarities between the cities by means of art. The project includes several "sequences" - meetings, workshops, interventions, city tours, exhibitions - in these cities. *Centrifugal* projects have explored traffic junctions, satellite receivers and the penetration of "euro" signs in the urban landscape.

The Finnish Institute has been delighted to facilitate the group's kick-start meeting in London, other networking events and a public sequence produced in Belfast in April 2008. In 2009, *Centrifugal* will be publishing a book, running research workshops and planning an exhibition for 2010.

“Some of the most important aspects of cultural sharing are the formal and informal networks that artists can achieve by conversation and exchange of ideas and experience. The Finnish Institute has provided a focus that brings quality to the fore.”

NOEL KELLY,
DIRECTOR, VISUAL
ARTISTS IRELAND

“We're delighted to be working with the Finnish Institute to bring an international dimension to Camden Arts Centre's 2009 animation project and build lasting relationships with Finnish artists into the future.”

JENNI LOMAX,
DIRECTOR, CAMDEN
ARTS CENTRE

“ Helsinki Design Week is excited about collaborating with the Finnish Institute in London. It seems to be a natural step – in the same way as our current co-operation with the Milanese Zona Tortona. We believe in openness and sharing ideas. We look forward to being able to do this with Londoners as well.

”
KARI KORKMAN,
 DIRECTOR, HELSINKI
 DESIGN WEEK

We are working on a number of major projects in 2009 and beyond. These projects aim both at providing visibility for the most interesting new talent within the specific areas, establishing long-term professional networks and facilitating dialogue between Finland, Great Britain and Ireland.

DESIGN

This project aims at promoting new Finnish design and networking Finnish and British design professionals. A large series of events – including exhibitions, showcases, workshops and talks – is being developed with partners such as Helsinki Design Week and Design Forum Finland. The events run from Autumn 2009 onwards culminating in a main event during London design week in September 2010.

MEDIA SPACE

This project explores the role of localities in the changing broadcast environment and examines the challenges the current digital switchover faces vis-à-vis civil society. The programme promotes debate concerning the place of local urban media in today’s society and also aims to network and facilitate exchange between artists who are developing new content, technologies and production models for the changing field of broadcast. In 2009 projects include a media art residency and a networking meeting between Finnish, Irish and British urban media experts.

STORY SPACE

Story Spaces will promote Finnish literature and storytelling in the UK, networking key partners and strengthening export structures in Finland. In collaboration with a network of Finnish publishers and FILI (Finnish Literature Exchange), the Institute is developing promotion material, facilitating expert visits to Finland and organising a networking seminar in London. As part of these activities, the Finnish Institute is also working with a range of animation projects.

The Finnish Institute runs a highly successful Expert Visit Programme in which select key partners from all areas of the arts visit Finland, meet partners and research Finnish art and artists. We host an average of 15-30 visits per year. In collaboration with local arts and culture organisations, the Finnish Institute hosts the visit and organises a tailor-made programme for invited curators, producers and other arts professionals.

–
 VISITS SINCE 2003
 –

- alt.wear
- Barbican Cinema
- BBC3
- BBC4
- Belfast Audiovisual Festival
- Bradford Film Festival
- Brief Encounters
- British Film Institute
- British Museum
- Camden Arts Centre
- Carbon Hero
- Cardiff Screen
- CCA – Centre for Contemporary Art
- Classic Rock
- CMN Tours
- Cork Film Festival
- Crawford Municipal Art Gallery
- Daily Telegraph
- Dance Base
- Dance Europe
- Dance4
- Delta PR
- DJ-Mag
- Dogwoof pictures
- Doors Of Perception
- Drownedinsound
- DShed
- FACT
- The Fence
- Fotonet
- Fourth Door Review
- Frieze magazine
- Future Shorts
- Future Systems
- Greenwich Printmakers’ Gallery
- The Guardian
- Huddersfield
- Contemporary
- Music Festival
- Hydropohonic
- ICA
- The Independent
- Independent Cinema Office
- International Workshop Festival
- Irish Film Centre
- Irish Museum of Modern Art
- Leeds International Film Festival

- Lux
- Manchester International Short Film Festival
- Mobile Bristol
- N.I.P – New Interfaces of Performance
- New Media Scotland
- Northern Lights Film Festival
- The Observer
- Onedotzero
- Photographer’s Gallery
- Picturehouse Cinemas
- The Place
- Randomhouse
- RTE
- Serious
- Sheffield Documentary Film Festival
- Sleaze
- Soda Pictures
- Southbank Centre
- Tartan Films
- Tate Liverpool
- Tyneside Cinema
- Wilkinson Gallery
- Wire Magazine
- Writer.net

“ Helsinki is full of contradictions, beauty and subliminal energy: perfect for documentary. At Docpoint I also had a rare opportunity to meet filmmakers from places like Turkey, Jordan and Estonia, which made me see the value and necessity of a place like this in the documentary circuit.

”
HUSSAIN CURRIMBHOY,
 FILM PROGRAMMER,
 SHEFFIELD DOC/FEST

“ During my time at Southbank Centre I always relied on the various partners I worked with to be both ambitious and practical – and have good taste. Trusted colleagues at the Finnish Institute had pro-active and smart programming ideas. They also gave support for wonderful visits to see work in Finland in unusual locations.

”
JULIA CARRUTHERS,
 FORMER HEAD
 OF DANCE &
 PERFORMANCE,
 SOUTHBANK CENTRE

“The residency was a very intensive working period away from everyday life. New impulses. A lot of time, yet within a limit, which forces you to work. There is a pressure but it's lovely. A luxury.”

RENJA LEINO,
ARTIST-IN-RESIDENCE,
FOTONET AND
WINCHESTER
SCHOOL OF ART, 2007

“I met many local curators and artists, and made new friends. I still keep in touch with many of these new contacts, years after the residency. This residency has had a profound impact on my work. It changed the way I work and during it, I developed ideas that have strongly influenced my later work.”

HANNU KARJALAINEN,
ARTIST-IN-RESIDENCE,
SPIKE ISLAND, PICTURE
THIS AND WATERSHED/
ELECTRIC PAVILION,
2005

The Finnish Institute launched an artist-in-residence programme in 2002 and has never looked back. The purpose of the programme is to offer Finnish artists opportunities to work in interesting British and Irish contemporary art institutions and to create lasting networks between all the partners involved. So far twelve Finnish artists and two artist collectives have visited Britain and Ireland, while seven British or Irish artists have visited Finland.

Residencies provide excellent multi-tasking opportunities for all those involved. The artists may develop their creative projects away from familiar surroundings, foster new contacts and immerse themselves in the local art scene. Exhibitions, work-in-progress presentations, talks and publications all form important aspects of these visits.

The British and Irish host organisations gain an insight into Finnish art and artists starting with the selection process which deepens into a dialogue with the arrival of the artist.

The supporting organisations in Finland gain new contacts, further their knowledge of the workings of the British and Irish art field and establish contacts with key participants. Finnish principal partners include the Arts Council of Finland, FRAME (The Finnish Fund for Art Exchange) and HIAP (Helsinki International Artist-in-residence Programme).

In 2009, the Finnish Institute will develop the residency programme further and source new partners.

PARTNERS

ArtsAdmin, London
Arnolfini, Bristol
Baltic, Gateshead
Camden Arts Centre, London
CCA – Centre for Contemporary Arts, Glasgow
FACT/Bluecoat Arts Centre, Liverpool
Spike Island/Picture This, Bristol
Spacex, Exeter
Temple Bar Gallery & Studios, Dublin
Winchester Gallery, Winchester

HELSINKI – DUBLIN EXCHANGE

Temple Bar Gallery & Studios, Dublin and HIAP – Helsinki International Artist-in-residence Programme, Helsinki.

In 2007, the Finnish Institute set up a pilot residency project to foster the exchange and deepen the professional networks between Ireland and Finland. Annually, one Finnish artist is selected to work for three months at the Temple Bar Gallery & Studios in Dublin and one Irish artist at HIAP in Helsinki. In 2008 the participating artists were Heli Rekula and Niamh O'Malley. The pilot project is further supported by Culture Ireland and FRAME (Finnish Fund for Art Exchange). Experiences of the project have been extremely positive and Temple Bar has proved to be an excellent partner. The participating artists have gained visibility, durable networks and been invited to undertake further projects in the host cities.

“The partnership has been a fruitful and positive experience in terms of the opportunities it opens up for Irish artists at HIAP, and also the possibilities it creates for meaningful exchange and dialogue with international partners. The model for the TBG&S/HIAP exchange has formed a fundamental part of our strategy for future residency exchanges and collaborations.”

CLAIRE POWER,
EDUCATION & STUDIOS
DEVELOPMENT,
TEMPLE BAR GALLERY
& STUDIOS



Johanna Lecklin,
Story Café
2004–
Artist-in-Residence, ArtsAdmin,
London, 2004

“ It started very small. The Institute sponsored an event I did with a couple of hundred pounds. It was a sold out event, and ever since we've done several other projects together every year, including the Wire Magazine Festival and the latests, *The Approximately Infinite Universe Tour*. ”

ERIC NAMOUR,
PRODUCER,
NO SIGNAL

“ *no name Thousands* was a good step ahead, helping me to widen my contact fields and get into managing projects alongside with the creative work. I believe I am in the right path and in no doubt the support from the Finnish Institute was hugely relevant in assisting me ahead. ”

SONJA JOKINIEMI,
CHOREOGRAPHER

Exporting fresh talent from Finland to Great Britain and Ireland and creating opportunities for British and Irish art professionals to work in Finland has always been a crucial part of the Finnish Institute's Arts & Culture Programme.

The Institute has, among other sectors, consistently worked towards supporting and facilitating relationships within the fields of independent music and contemporary dance.

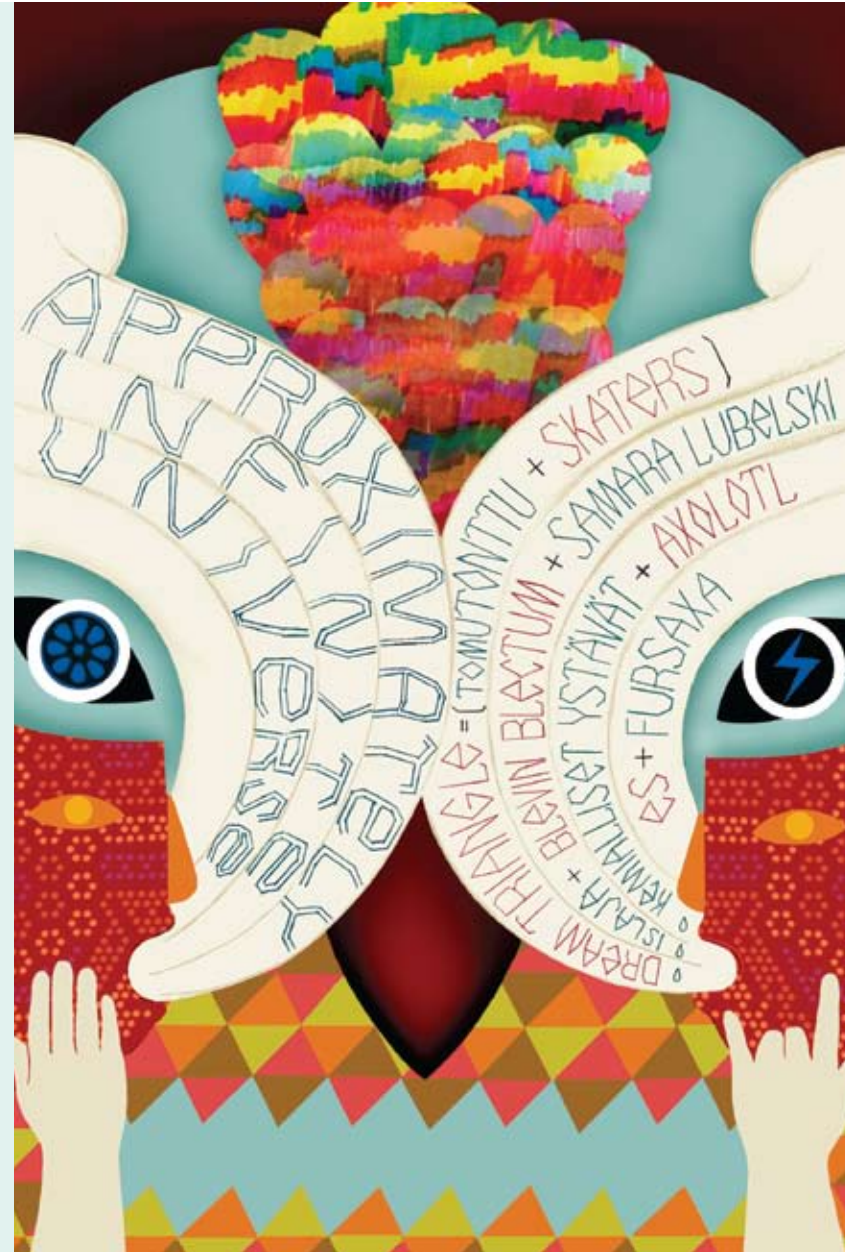
THE APPROXIMATELY INFINITE UNIVERSE TOUR

UK record label *No Signal* and its producer and curator Eric Namour are one of the Institute's longstanding partners. *The Approximately Infinite Universe Tour* was one of the most interesting UK music events in 2008. The tour was organised in collaboration with Finnish FONTAL Records and British producers; Contemporary Music Network, No-Fi and Wire magazine. It brought together the best Finnish and US talent in avant-folk and psych rock with jaw-dropping collaborations and shows in seven venues around the UK.

NO NAME THOUSANDS

Young choreographer Sonja Jokiniemi's performance project, *no name Thousands* was shown as a part of the Resolution! Festival and Brighton Festival Fringe 2008. The project was developed with the Nightingale Theatre and supported by the Finnish Institute.

In spring 2009 Jokiniemi is working as an artist-in-residence with Daghdha Dance Co. in Limerick, Ireland and continuing to develop her art and research practice.



PARTICIPATING FINNISH ARTISTS 2008

Arto Halonen
Barbro Björkfelt
Dream Triangle
Eeva-Mari Haikala
Egle Odd
Elina Brotherus
Fonal Records
Hannu Häkkinen
Hannu Karjalainen
Heli Rekula
Iro Haarla
Jaana Kokko
Janne Lehtinen
Johanna Lecklin
Johanna Venho
Jonne Pitkänen
Jouni Inkala
Juhana Moisander
Kaisa Leka
Kalle Hamm
Kati Boosey
Kimmo Pohjonen
Kristian Krokfors
Kristiina Junttu
Liisa Roberts
Marika Väisänen
Marko Timlin
Merja Virolainen
Mika Ronkainen
Minna L Henriksson
Oddarang
Otto Karvonen
Pekka and Lea
Kantonen
Pertti Kekarainen
Roi Vaara
Sami van Ingen
Simo Kellokumpu Co.
Sonja Jokiniemi
Taru Elfving
Teresa Dillon
Tero Saarinen Co.
Tuomo Tammenpää
Virva Sointu



Roi Vaara,
Artist's Dilemma
 1997
 performance on video
Laughing in a Foreign
Language, Hayward
 Gallery, London,
 January–April 2008

The Society Programme of the Finnish Institute in London aims to draw attention to key challenges emerging in contemporary society with a specific focus on British, Irish and Finnish societies. We provide our partners with a platform and networks to discuss and act on these issues.

Our programme focuses on the debate concerning the role of people in community and their responsibility towards it. Our partners include universities, think tanks and other research organisations, public policy providers and policymakers. At present we are focusing on four specific strands: Social entrepreneurship, philanthropy, equality in educational opportunities and labour migration.

Programme Director's Introduction

16
SOCIETY

The mission of the society programme is very simple: to pursue positive change. Our tools for making an impact are reports, seminars, articles, media influence and meetings with policy makers.

When I started in February 2008, the Institute had embarked on a mission of change. We simply wanted to make more impact on policy making. From facilitating the exchange of academic researchers, offering grants for travel to conferences and hosting seminars, we wanted to make our operation to work in a wider context and to make a difference in these societies.

The process starts with an idea about society that gets picked up at a conference, in discussion with experts or perhaps from an article in a journal or newspaper. We formulate a hypothesis based on that idea and start a process of gathering evidence for or against the hypothesis. All stages of this process involve collaboration with our partners in Great Britain, Ireland and Finland. Once we reach a stage where we have enough evidence to form an opinion, we enter into dialogue with our partners and public in Great Britain, Ireland and Finland. Together we communicate these ideas to the public.

The communication of these thoughts, although the most visible part of our activities, is merely the tip of the iceberg. Prior to that a lot of hard work goes into finding the right experts and just plain evidence gathering.

Communication is also a two way process. Every time we meet and have discussions with our partners or stakeholders, our thoughts get refined and changed. On the following pages I have gathered a few highlights – that is topics, people and initiatives with which we have been involved along the way.

The journey has begun and I look forward to discovering more partners and collaborators on the way.

Dr ANTTI KARJALAINEN
PROGRAMME DIRECTOR, SOCIETY



Social Entrepreneurship

17
SOCIETY

The term 'social enterprise' denotes a business whose aim is to serve a social purpose. In the UK government's definition these businesses recycle their profit back into the activity. For example, in the UK, *the Big Issue* is a company that empowers homeless people to sell and produce a magazine and thereby helps them to generate income for themselves. *The Big Issue* trades for a social purpose and uses its profits to advance the needs of its beneficiaries.

The Society Programme has lifted social entrepreneurship as one of its main topics because we believe that these kinds of enterprises have a strong impact on society in the future. A social enterprise brings together a number of issues:

- Social business is value driven. It can be distinguished from corporate social responsibility by having values as its core rather than an addition to the main agenda.
- Social businesses deliver third sector goals with an entrepreneurial flair.
- Social businesses have increasing importance in the economy during and after recession. They help communities to respond to the impact of recession precisely because social enterprises recycle the profit back to the business and thereby to the community.



“
The Finnish Institute in London has played a key role in introducing the UK concept of social enterprise to a great number of Finnish entrepreneurs, decision makers and other stakeholders. It has been a pleasure to collaborate with the Finnish Institute and we are looking forward to continuing this successful co-operation in the future as well.
”

JONATHAN BLAND
CEO, SOCIAL
ENTERPRISE COALITION

What distinguishes social enterprises from non-social enterprises? We follow the UK government's tried and tested definition according to which social enterprises are businesses whose primary purpose is to address a social or environmental problem and who recycle the profit back to the business.

What does this sector of enterprises look like in terms of size and other important characteristics? To find this out, we organised a round-table conference for key stakeholders in Finland and in the UK, we met with important UK partners from Social Enterprise Coalition UK and Social Enterprise Coalition Scotland.

In the process we identified a need to understand this phenomenon better in Finland. Discussions with the Federation of Finnish Enterprises led us to insert two questions into their annual survey. We found out, among other facts, that 14.8% of all small and medium sized enterprises in Finland identified with the criteria of having a social mission and recycling the profits back to the activity. These results will be published as separate publication in Finnish.

Armed with these new facts about the sector, we will continue our discussions with the Ministry of Employment and the Economy in Finland and other important stakeholders on legislation and build public support for social enterprise. We will work to ensure that social enterprise is put on and remains on the public agenda both here and in Finland, and that entrepreneurs in both countries find each other.



Social enterprise:
Greenwich Leisure
Ltd (Swiss Cottage)

Higher education in Finland is changing rapidly. The parliament is discussing a new university bill in spring 2009 which would allow Finnish universities to become public legal entities. Among many other things this enables and encourages them to look for new sources of funding in the private sector.

Finnish universities are innovative and they serve the nation's needs but they can improve their international competitiveness and standing. There is a correlation between doing well internationally and attracting philanthropic income.

We know that in the UK (2006-07):

- Universities raised in new funds £548million
- Median cost per pound raised 0.26pence
- Growth in philanthropic donations 45% (from 2004)

Can we attain the same ratio in terms of money spent on fundraising in Finland? In relation to the sources of private income a large part of the discussion has focused on attracting funding from business. Studies show, however, that income from private individuals and foundations is larger. Private individuals are largely found from former students of the university. Thus, we identified the challenge for Finnish universities as two-fold. First, we will work to identify areas of development work that need more attention, and especially to raise awareness about work with alumni. We will also support the activity of building and strengthening good development and fundraising practices in Finnish universities.

We will organise a series of meetings of development directors starting in June 2009 and act as radar in the UK to import good ideas, experts and practices into Finland. By the end of 2010 we would like to see Finland actively engaged in development networks in the UK and the rest of Europe.

THE FINNISH
UNIVERSITIES
ACT REFORM

- | Universities will be separated from the Finnish State.
- | They will become independent legal personalities – public corporations or foundations subject to private law.
- | The network of institutions for higher education is changing, e.g. the Helsinki University of Technology, Helsinki School of Economics and University of Art and Design have founded Aalto University.



Good education should not be a privilege of the few. Good education ought to be available to everyone regardless of his or her income or background. Education should not be a tool to preserve unjust structures in society.

Finland is doing well compared to the UK on equal educational opportunities. Influence of parental background for entry to educational institutions and careers has decreased over the last 20 years. What is increasing, however, is the significance of geographical location in relation to education. In the UK the situation is worse. Young people's education is still a matter of social background. Over last ten years the UK government has focused on this issue and invested significant funds to improve access to education at all levels.

We would like the UK to benefit and be inspired by the long-term measures and solutions that Finland has to offer on education. But we would also like to deepen the understanding of the significance of background factors on education in Finland.

We have launched a small qualitative study of the housing market in Finland to find out about the influence of school reputation on making decisions about house purchase. A conference on inequalities in education will take place in Finland in the Autumn 2009. The aim of the conference is to bring researchers and decision makers together to discuss these findings.

“
The Finnish Institute
creates excitement
by bringing together
explosive minds.

”
ROOPE MOKKA
DEMOS HELSINKI

What makes a city an attractive place to move to? When an educated labour force decides to live and work somewhere, what is this decision based on? Why has London been so attractive for a work force for over 20 years and will it continue to be so?

We are interested in migration from a city's point of view. In particular, interesting questions arise when policies on city and state level clash. For example, regulation of the labour market is discussed on the national level, yet the majority of migrants move to cities and urban areas.

Our aim is to generate discussion on issues affecting these two levels of managing migration. We will do this by bringing researchers and policymakers together in small meetings and publish the findings. These meetings starting in autumn 2009 will facilitate contacts between individuals from local and national governments, think-tanks and universities.



ROUND-TABLE WITH PRESIDENT AHTISAARI

The Finnish Institute in London and the University College London's School of Slavonic and East European Studies (SSEES) organised a high-profile round table on Kosovan Questions in September 2008. Nobel Peace Prize laureate Martti Ahtisaari, former President of Finland, participated in the round table discussion. The aim of the event was to bring together Ahtisaari's expertise on the Kosovan question with eminent academics and journalists. He commented the event, and the Institute's role in it, as follows:

"I enjoyed taking part in the seminar organised by the University College London and the Finnish Institute. It was a great pleasure to survey developments and the future of the Kosovan Questions together with the panel of scholars, regional specialists and other experts. I see the work of the Finnish Institute in London as very valuable in bringing together visionaries from different fields of research expertise and policy-making".

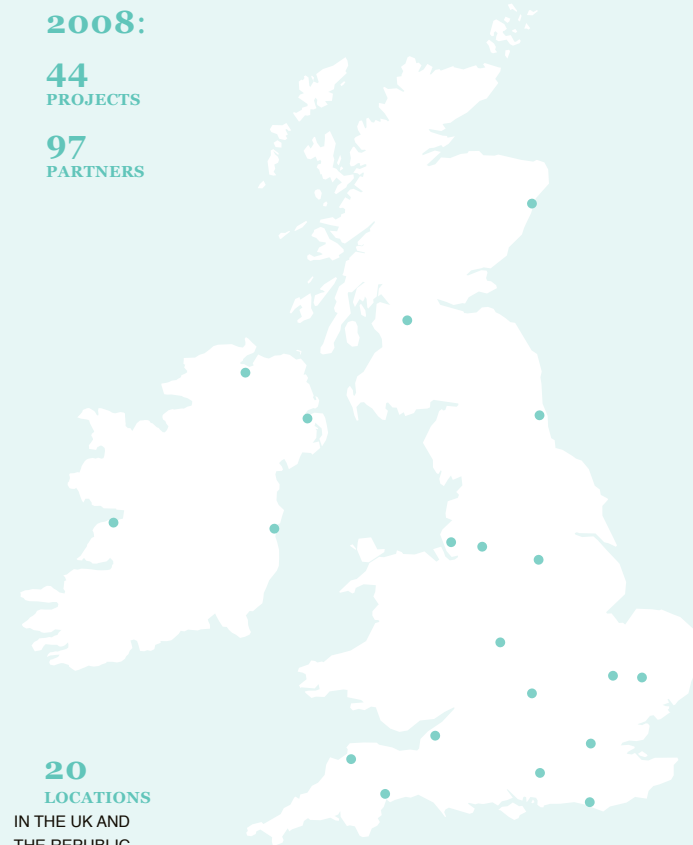




2008:

44
PROJECTS

97
PARTNERS



20
LOCATIONS

IN THE UK AND
THE REPUBLIC
OF IRELAND
Aberdeen
Ballyvaughan
Barnstaple
Belfast
Birmingham
Brighton
Bristol
Cambridge
Cocking
Dublin

Exeter
Gateshead
Glasgow
Liverpool
London
Londonderry
Manchester
North Aston
Nowton
Sheffield

NETWORK

The Finnish Institute in London is a part of the **Finnish Cultural and Academic Institutes** network which is formed of seventeen independent institutes. We are also part of **EUNIC, the European Union National Institutes for Culture network.**

FACTS

The Finnish Institute in London was founded in 1991. Our main funding comes from the **Ministry of Education in Finland.**

STAFF

Raija Koli
Director
Dr Antti Karjalainen
Programme Director,
Society
Hanna Harris
Programme Director,
Arts & Culture
Anita Rockman
Administrator
Animaya Grant
PR

The Finnish Institute also employs trainees.

–
SOCIETY
–

Academy of Finland
Ashoka
British Council Finland
CASE Europe
City of Helsinki
City of Tampere
Confederation of Finnish
Industries
Demos Helsinki
Demos UK
Embassy of Finland, Dublin
Embassy of Finland, London
Fair Finance
Finnish Funding Agency for
Technology and Innovation
(Tekes)
Finnish Innovation Fund (SITRA)
The Finnish Institute in Germany
Finnish-British Chamber of
Commerce
Finpro
Green Tomato Cars
Greenwich Leisure Limited
Hackney Community Transport
Hanasaari, The Swedish-Finnish
Cultural Centre
Helsingin Sanomat
Hoxton Apprentice
HUB Kings Cross
IFR – Institute of Food Research
Kirkon sosiaalifoorumi
Lancaster University
Middlesex University
Ministry for Foreign Affairs
in Finland
Ministry of Education
Ministry of Employment and
the Economy
National Centre for Professional
Development in Education
National Institute for Health
and Welfare
Neo-Act Oy
NESTA, National Endowment for
Science, Technology and the Arts
New Economics Foundation
Parliament of Finland
Social Enterprise Coalition
Society for the Study of Ethnic
Relations and International
Migration (ETMU)
Syfo Oy
Technical Research Centre
of Finland (VTT)
Time Bank
University College London,
SSEES (School for Slavonic
and East European Studies)
University of Cambridge
University of Helsinki
University of Oulu
University of Ulster
University of Oxford
Venturesome
Åbo Akademi University

–
ARTS & CULTURE
–

Aalto University
Alvar Aalto Academy
Arts Council of England
Arts Council of Finland
Arts Council of Ireland
Belfast Exposed
British Council
Bureau Gallery
Burren College of Art
Camden Arts Centre
Carbon Hero
CCA – Centre for
Contemporary Arts
Centre for Media
Research – Northern Ireland
City of Zagreb
Contemporary Music Network
Cornerhouse
Dancebase
Dance Info Finland
Design Forum Finland
Doc Point – Helsinki
Documentary Festival
Doors of Perception
Embassy of Finland, Dublin
Embassy of Finland, London
EUNIC London
FILI – Finnish Literature
Exchange
FIMIC – Finnish Music
Information Centre
Finnish Cultural Institute
in New York
Finnish Institute in France
Flax Art Studios
Flow Festival
Fourth Door Review
FRAME – Finnish Fund for Art
Exchange
Hayward Gallery
Helsinki Design Week
Herbst Academy
HIAP – Helsinki International
Artist-in-residence Programme
ICA
IHME Days
IMMA – Irish Museum of
Modern Art
Improvised Music Company
Iok Arquitectura
Liverpool Biennial
London Design Festival
London Disability Arts Forum
Ministry of Culture, Republic
of Croatia
MUSEX – Music Export Finland
The National Gallery of Ireland
NICE09 Nordic Art and Culture
Festival
N.I.P – New Interfaces of
Performance
Nightingale Theatre
No signal
Parasol unit
The Place
Platforma 981
Polar Produce
Pratt Contemporary Arts
Pro Arte Foundation
Serious
Sheffield Doc/Fest
SoundUK
Southbank Centre
Student Centre Zagreb
Studio Group
Tate Liverpool
Temple Bar Gallery & Studios
The Wire
The World @ St George's West
Visual Arts Ireland
Void Art Centre
Winchester Gallery

–
CONTACT
–

**The Finnish Institute
in London**

35–36 Eagle Street
London WC1R 4AQ
United Kingdom
T +44(0)20 7404 3309
www.finnish-institute.org.uk
info@finnish-institute.org.uk

–
CREDITS
–

Design:

EMMI / www.emmi.co.uk

Photography/Images:

p.2, 6 and 16

Kristina McArthur

p.3, 17, 20, 22, 23 and 24

Jere Salonen

p.4

Riitta Ikonen

p.11

Johanna Lecklin

p.13

Illustration: Pauliina Mäkelä

Graphic Design: Matteo Rosso

p.14

Naranja

p.18

Grainger Laffan

Print:

Printed using vegetable based
inks by Geoff Neal Litho, a
CarbonNeutral® company with
FSC and ISO14001 Certification

Paper:

Cover: Keaykolour Antique Seal

Outer pages: Keaykolour

Recycled May

Inner pages: Chromomat

These papers have been
manufactured using FSC certified
pulp from well managed forests
and other controlled sources.